



spa treatment menu

SPA
portofino

01.01.2023

packages

signature package

lose yourself in an 80 minute therapeutic massage, 50 minute Youthful Glow Skin Illuminating Facial, and a 60 minute Sea Foam Mud Body Wrap

sea escape package

indulge in a true escape of your senses with a rejuvenating 50 minute custom facial, 50 minute therapeutic massage and your choice of a remineralizing or firming body treatment

spa sampler

delight in a 30 minute customized facial, 30 minute sea scrub and a 30 minute therapeutic body milk massage

HydraFacial™



The HydraFacial™

HydraFacial is an invigorating treatment that delivers long-term skin health and can be tailored to meet the specific needs of all skin types. While the normal HydraFacial protocol is a 30 minute treatment, It offers instant, noticeable results with no downtime or irritation. The HydraFacial treatment removes dead skin cells and extracts impurities while simultaneously bathing the new skin with cleansing, hydrating and moisturizing serums. The treatment is soothing, refreshing, non-irritating and immediately effective.

Signature HydraFacial™

this treatment deeply cleanses, extracts, and hydrates the skin utilizing super serums filled with antioxidants, peptides, and hyaluronic acid.

Platinum HydraFacial™

THE ULTIMATE HYDRAFACIAL™ EXPERIENCE

begin this detoxification process with lymphatic drainage. Continue with a deep cleanse, extractions and hydration of the skin while addressing specific skin care concerns. This HydraFacial™ includes the CTGF™ Boost and concludes with red LED Light Therapy. The Platinum HydraFacial™ features face, neck and décolletage for a luxurious experience.

Deluxe HydraFacial™

this is an invigorating treatment that includes all the essentials of the Signature HydraFacial™ while addressing your skin concerns with advanced solutions to address your specific need. This treatment includes LED Light Therapy to further enhance therapeutic outcomes.

The Deluxe HydraFacial™ options:

1. RESTORATIVE HYDRAFACIAL™

- CTGF™ (connective tissue growth factor) to improve the appearance of skin tone, texture, and elasticity and aids in antiaging.

2. CLARIFYING HYDRAFACIAL™

- Extended extractions and both red & blue LED Light Therapy for oil congested skin, inflammation and bacteria.

3. RADIANCE HYDRAFACIAL™

- Britenol™ boost to minimize the appearance of dark spots and sun spots. Uses red LED Light Therapy.

4. AGE REFINEMENT

HYDRAFACIAL™ DermaBuilder™ boost to reduce signs of aging with the use of peptides. Uses red LED Light Therapy.



facials

xmf youth revealing facial

with two professional masks and its unique resurfacing lotion, this treatment reaches the height of biotechnological performance and restores the skin's youthfulness, softness and luminosity instantly

circadia seasonal facial

step up your skin-care game with our Seasonal Choice Facial featuring renowned products from Circadia® with scents that will enhance your entire experience

This breakthrough facial utilizes a controlled amount of luxury serums and exfoliations generated at optimal levels in the skin to prove maximum benefits and replace the ruddy look associated with acne, rosacea, and telangiectasia, resulting in a brighter complexion. Leaving any skin type with glowing, deeply cleansed and nourished skin

youthful glow illuminating facial

brighten skin tone, reduce dark spots, and smooth away wrinkles with the perfect pairing of a 20% acid facial peel plus a soothing sheet mask

moisture quench hydrating facial

restore ideal moisture levels to all skin types with hydrating elements from the ocean

seaside express facial

enjoy an express facial that targets your specific skin care needs

seaside solutions custom facial

customize a luxurious treatment with products designed to meet your skin's specific needs

FACIAL ADD ON'S

Customize and enhance your facial with this collection of targeted treatments

dermaplane

dermaplaning removes unwanted peach fuzz (vellus hair) from the face and exfoliates the skin at the same time to create a smoother, glowing complexion

*led light mask**

utilize low level pulses of light to activate skin cells by converting light energy to promote healing and anti-aging and stimulate collagen formation

Blue - reduces frequency of acne breakouts

Red - smoothes fine lines, wrinkles, and diminishes sun spots

Red & Blue - effective in treating acne, rosacea and UV damage

**available only on select facial services*

eye perfection

moisturize, smooth and firm the delicate skin around the eyes

plumping lip smoother

quench dry, chapped lips and combat the signs of aging around the mouth

radiance peel

reveal younger looking skin and increase the rate of cellular turnover

décolleté parfait

target hyper-pigmentation and smooth creased skin on the lower neck and chest

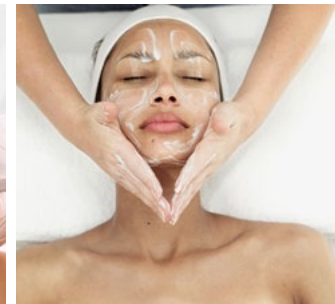
ice globes

minimize puffiness, relief in sinus pressure, reduce redness and kick-starting circulation — which helps to provide a radiant glow to the skin

champagne of the sea

localized detox (self heating mud)

a local application of Phytomer's warm, bubbly seaweed mud helps to relieve muscle tension and stress in your most over worked areas



specialty treatments

remineralizing body polish

enjoy a thorough exfoliation of the body with this effective mechanical scrub enriched with expert marine ingredients

after sun rescue & body firming wrap

anti-aging, firming after weight loss or childbirth, post sun

during this anti-aging body wrap every detail is looked after while cocooned in firming body gel, rich in anti-aging sea minerals

remineralizing body wrap

anti-stress, anti-fatigue, jet lag, recovery, moisturize

if feelings of fatigue, stress, and low energy are creating imbalance for your well-being, sea water is the perfect solution

sea foam body wrap

muscle melter, tissue detox

for tight muscles, joints, and tendons an intensely active marine mud will soothe sore tissue while toxins are drawn from deep within. Includes a luxurious application of ultra-moisturizing body milk to complete the experience

body treatments + massage

renewing exfoliating ritual

bask in therapeutic relaxation with the best of both worlds. After muscle relaxing, Self Heating Mud packs are applied to the spine. An exfoliation is performed using a creamy exfoliant infused with an endorphin releasing aromatherapy serum, which has a similar mood enhancing actions as those provided by the sun to simultaneously revitalize the skin and senses.

slimming algae jam body wrap

reinvent yourself with a 60-minute treatment to sculpt the figure, burn fat and reduce unwanted curves. Experience a whole-body slimming treatment, which combines a tonic massage and an original algae wrap, to refine curves, reshape and tone the silhouette.

sea holistic exfoliation & massage

combining light strokes, pressure and stretching, this Thai-inspired body massage eliminates tension knots one by one while providing gentle heat. The body scrub with marine salt crystals restores the skin's natural softness. Gradually, your mind surrenders to bliss, and a lasting sense of wellness sets in.



TREATMENT ADD ON'S

foot treatment

exfoliation to the feet to remove dead skin cells and replenish with a rich moisturizing mask followed by a foot massage to relax your entire body.

back exfoliation

dead skin cells are exfoliated with a body gommage followed by hydrating lotion application. Leaves back smooth and hydrated.

champagne of the sea

localized detox (self heating mud)
a local application of Phytomer's warm, bubbly seaweed mud helps to relieve muscle tension and stress in your most over worked areas.

aromatherapy

use of essential oils targeted for your specific need.

cupping therapy

an ancient form of alternative medicine in which a therapist puts special cups on your skin for a few minutes to create suction. Experience improved blood flow, reduced inflammation and relaxed muscles.

CBD relief

bring harmony to the body with this organic CBD and passionflower enhanced service that cares for tired muscles, soothes skin and re-boots the mind.



massage

swedish relaxation massage

light relaxing pressure to reduce stress and relax the body

sports massage

sports massage includes different techniques that focus on manipulating the soft tissues of your body to correct imbalance caused by athletic performance with medium to firm pressure. Also applied with stretching techniques, beneficial for those who are looking to improve their range of motion, increase flexibility, relieve muscle aches caused from recurrent activity

prenatal

this soothing massage session is designed specifically to release the tired and tense areas of the body that are most affected during pregnancy

deep tissue

firm to intense pressure to deeply relax areas of chronic tension & stress

hot stone massage

hot stone massage is a form of massage therapy that follows the same principles of Swedish Massage with the addition of heated stones, which helps lead to deep relaxation

himalayan salt stone massage

a full body, muscular massage using medium pressure to massage the entire body. The warmth of the stones helps in achieving a greater sense of relaxation. Enhancement to the body through the salt stones technique. This restorative massage provides deep relaxation and helps to relax body, mind and spirit

CABANA MASSAGES

swedish relaxation massage

light relaxing pressure to reduce stress and relax the body

deep tissue

firm to intense pressure to deeply relax areas of chronic tension & stress

nail care

a moisturizing scrub prepares the skin for nail shaping and a detailed cuticle grooming session. Skin is then hydrated with a gentle, relaxing massage and the experience concludes with a polish application for beautiful hands and feet.

- Manicure & Pedicure
- Classic Spa Manicure
- CBD Relief Truffle Pedicure
- Classic Spa Pedicure
- Buff Pedicure
- Gentleman's Manicure
- Gentleman's Pedicure
- Polish change
- Paraffin dip
- Add French
- Acrylic soak off
- Add gel polish
- Add soak off gel

CBD relief truffle pedicure

soul to sole care is at the heart of this CBD and warm shea butter spa pedicure that brings the skin and body into harmony. A soothing leg and foot massage with our CBD and age defying paracress infused Balance Oil eases muscle tension and cares for skin

tinting & waxing

tinting

get the look of deep dark lashes without having to apply mascara

- Brow Tint
- Lash Tint

lash lift and tint

a Lash Lift and Tint is a semi-permanent treatment that involves two separate treatments that lifts, curls, and darkens your natural lashes. It is designed to give you beautiful, voluminous and long-lasting lashes that will make your eyes pop



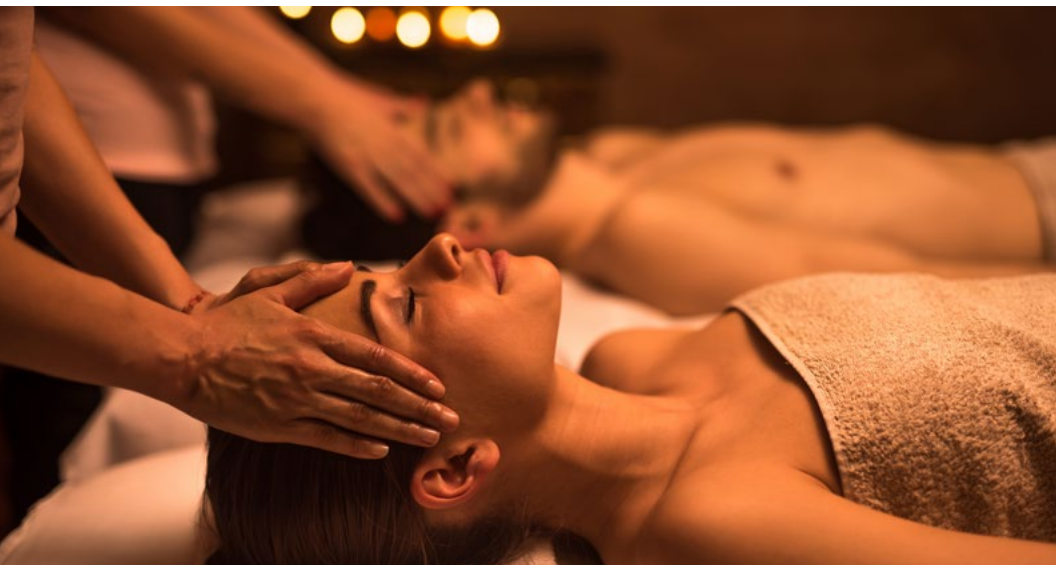
paraffin dip

Paraffin Dip added to your pedicure helps open pores and removes dead skin cells, helping make the skin supple and soft. When applied to the skin, it adds moisture and continues to boost the moisture levels of the skin even after the treatment is complete

waxing*

- Brow
- Lip
- Bikini
- Brazilian
- Arms
- Legs
- Back
- Chest
- Underarms

*Clients are responsible for informing service provider of any creams, lotions or other products that could interfere with waxing



how to spa

To avoid rushing the check-in process, spa guests should arrive a minimum of **20 minutes** prior to their first scheduled appointment. Guests are encouraged to relax in the spa lounge to give their mind an opportunity to enter a peaceful and tranquil state prior to receiving services. Spa guests receive a robe, slippers and a locker at check in. Special draping practices are used during all treatments for guest comfort and privacy. Bathing suits are required in the jacuzzi.

age requirements

No one under the age of 21 is permitted in the spa lounge or locker room area. Some spa services may be booked for our guest's under 18, if accompanied by an adult.

14-17 YEARS - Guest may receive any of the services offered, but a parent must sign the intake form & accompany them at all times.

18-20 YEARS - Guest may receive any of the services offered and sign their own intake form, but are not permitted to use the spa amenities in the locker room. The guest will be escorted to and from the treatment room by their therapist.

cancellation notice

All services cancelled or changed within 24 hours will be charged the full rate.

gratuity

A 20% gratuity will be added to all spa services

premier discount

Premier spa guests will receive a 10% discount on all spa services

no show

Failure to arrive for appointment will be charged for the full cost of service, excluding the 20% gratuity.

